

Features

- Frequency Range 1 to 1000 MHz
- Low Cost and RoHS Compliant
- Small SMT package
- Available in Tape-and-Reel
- 50 Ω Characteristic Impedance

Applications

- Broadband
- Wireless



Product Description

The MRFSP4525 2-way Splitter is designed for applications that require small, low cost, and highly reliable surface mount components. Applications may be found in broadband, wireless and other communications systems. These units are built Lead-Free and RoHS compliant. S-Parameters are available on request.

Specifications

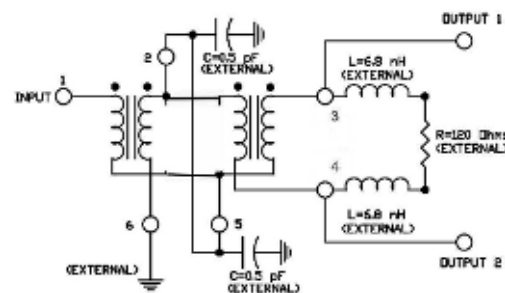
Parameter	Min	Typ*	Max	Min	Typ*	Max	Min	Typ*	Max
Frequency Range (MHz)	1		10	10		100	100		1000
Insertion Loss (dB)		0.15	0.25		0.30	0.35		0.6	1.0
Isolation (dB)	20	33		30	38		30	35	
Input Return Loss (dB)	20	30		25	28		17	20	
Output Return Loss (dB)	14	36		25	36		14	20	
Amplitude Balance (dB)		0.10	0.15		0.10	0.15		0.15	0.25
Phase Balance (Degrees)		0.5	1.0		0.6	1.0		1.0	3.0

* Typical data represents mid-band performance @ 25 C

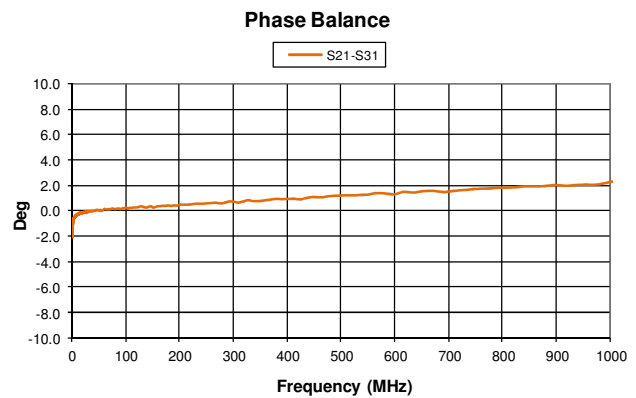
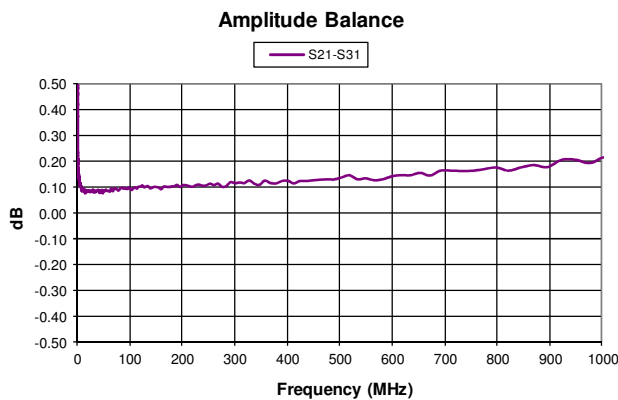
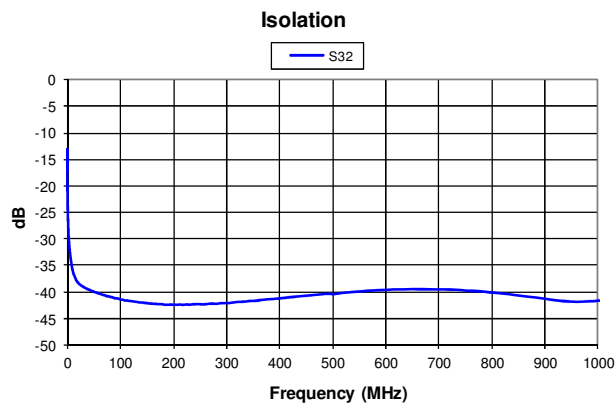
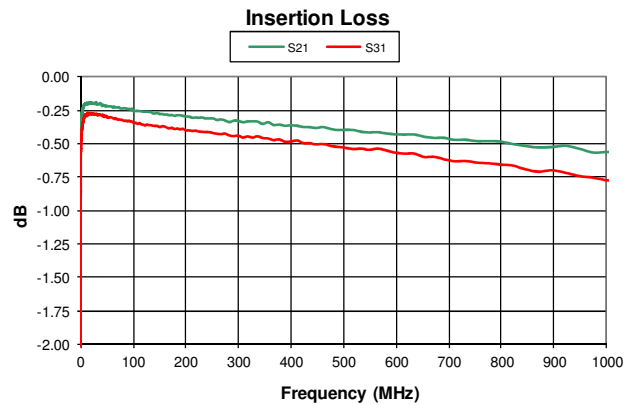
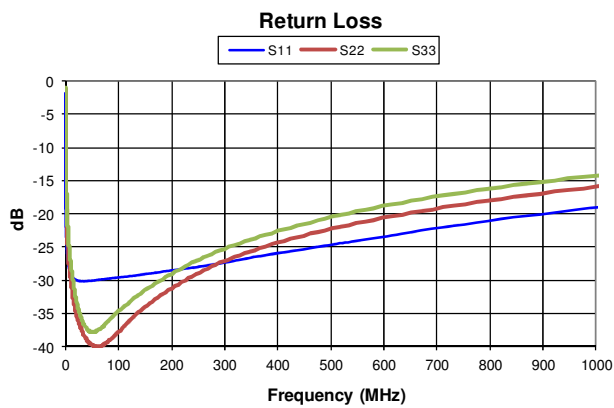
Absolute Maximum Ratings

Parameter	Maximum
RF Power	2 Watts
Operating Temperature	-45 to +100 °C
Storage Temperature	-55 to +125 °C

Schematic



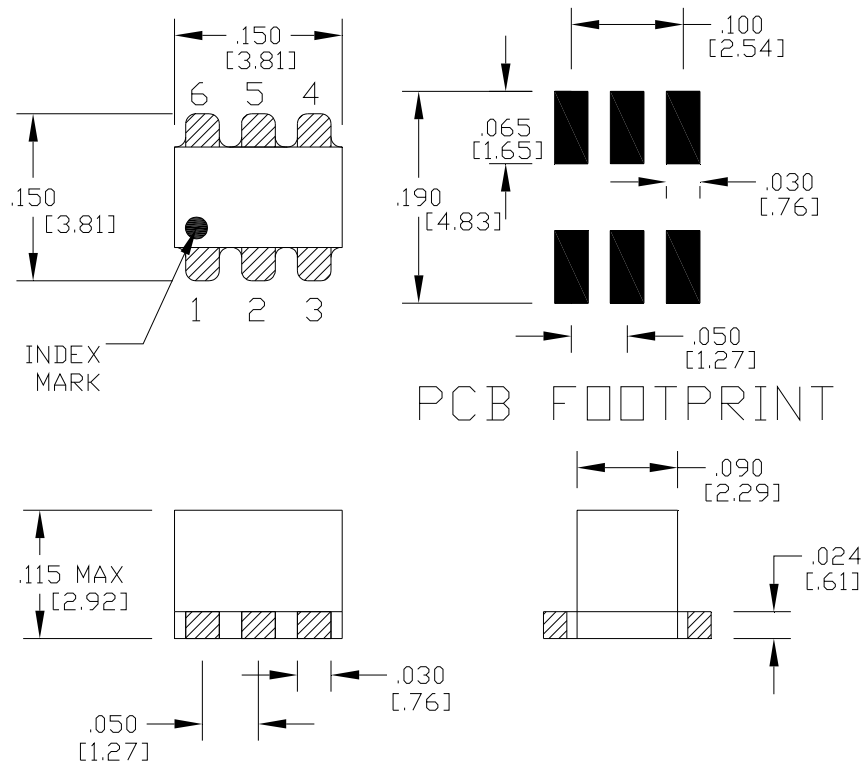
Typical Data



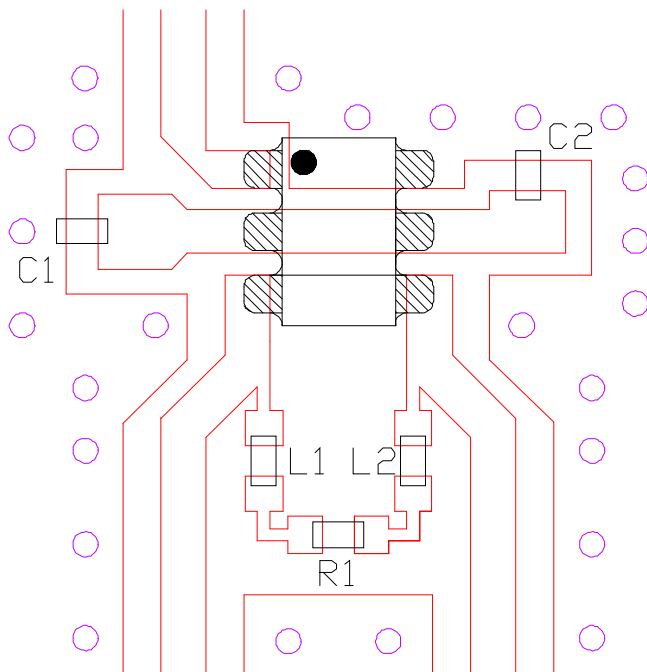
Pin Out

Pin	Function
1	INPUT
2	C2
3	OUTPUT 1, L1, R1
4	OUTPUT 2, L2, R1
5	C1
6	GROUND

Package S19



MiniRF Incorporated

Application Footprint

$C1 \ \& \ C2 = .5 \ \mu\text{F}$

$L1 \ \& \ L2 = 6.8 \ \text{nH}$

$R1 = 120 \ \Omega$