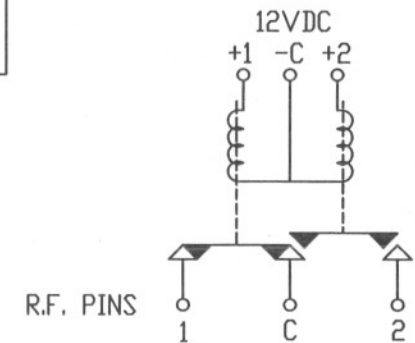
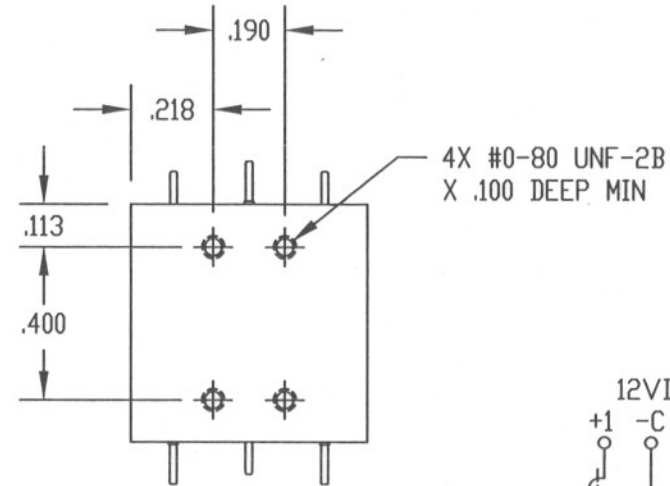
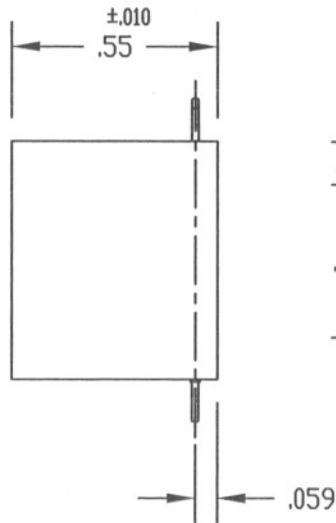
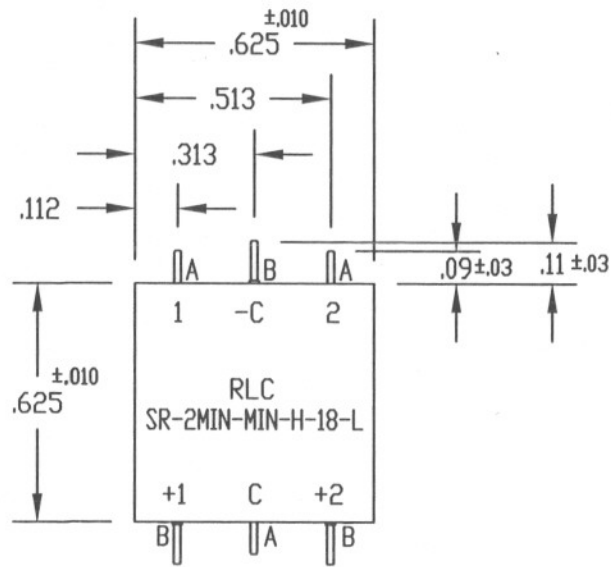


DO NOT SCALE DRAWING

	40910	A	
REV	DESCRIPTION	DT	BY
A	REVISED ECN 13880	1-8 03	PF



SPECIFICATIONS:

FREQUENCY RANGE (GHz):	DC-18
VSWR (MAX):	1.7:1
INSERTION LOSS (MAX):	0.7 dB
ISOLATION (MIN):	40 dB
IMPEDANCE:	50 OHMS NOMINAL
OPERATING VOLTAGE:	12 VDC
OPERATING CURRENT:	150mA MAX @ 12VDC, 25°C
COLD SWITCHING RF POWER:	10 WATTS MAX
SWITCHING TIME:	15 MS MAX
SWITCHING MODE:	PULSE LATCHING
SWITCHING SEQUENCE:	BREAK BEFORE MAKE

NOTES:

- 1) A PINS (3) FOR THE RF
- 2) B PINS (3) FOR THE COIL
- 3) PINS DIAMETER .018

MATERIAL	SR-2MIN-MIN-H-18-L SWITCH OUTLINE			
FINISH	TOLERANCES UNLESS OTHERWISE SPECIFIED FRACTIONS ± 1/64 ANGLES ± 1/2 XX ± .020 XXX ± .005	B/M	5135	SOL
		SCALE 2:1		
		DWN	PF	9-12-02
		APPD	OQ	9-16-02
		RLC ELECTRONICS 83 RADIO CIRCLE, MT. KISCO, NEW YORK 10549		
		A	40910	A